

Using only Internet explorer go to idatalink.com. Other browsers will not work.

Register an account.

After registering you will be prompted to download WEBLINK.



WEBLINK UPDATER PLUGIN REQUIRED

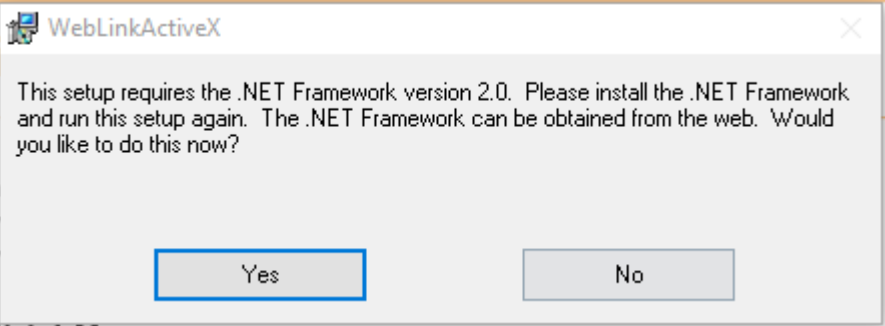
CLICK HERE TO DOWNLOAD THE LATEST VERSION.

CLICK HERE TO DOWNLOAD THE LATEST **WEBLINK UPDATER**

Follow the prompts to complete the download and setup the software.

FAQ

Q. When trying to install Weblink I get this error:

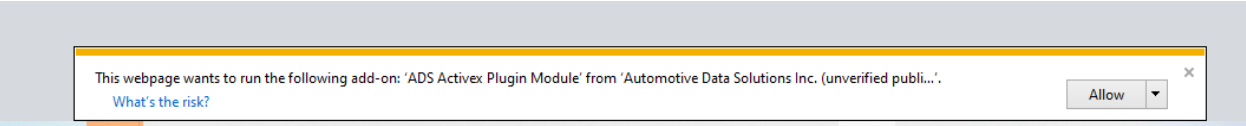


A. You can download the .NET Framework over here: After setting up the .NET Framework try setting up WEBLINK.

<http://12voltdata.com/ads/tools/dotNetFx35setup.exe>

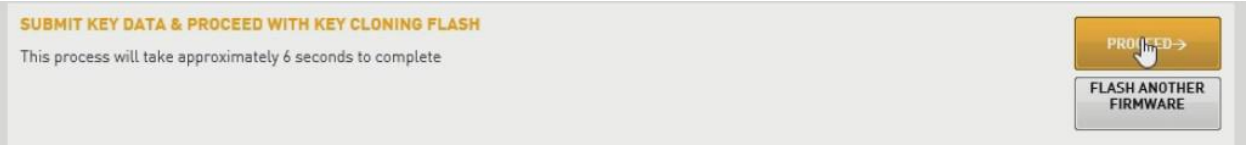
Q. After I install Weblink it just keeps on asking me to download again.

A. Check the bottom of the screen and click Allow.



After WEBLINK is successfully installed you only need to complete the KLON process, you **should not** flash any firmware.

You need the prompt that looks something like this:



If you're at a prompt asking for the year make and model, you're at the wrong spot.

The prompt below is not what you want.

